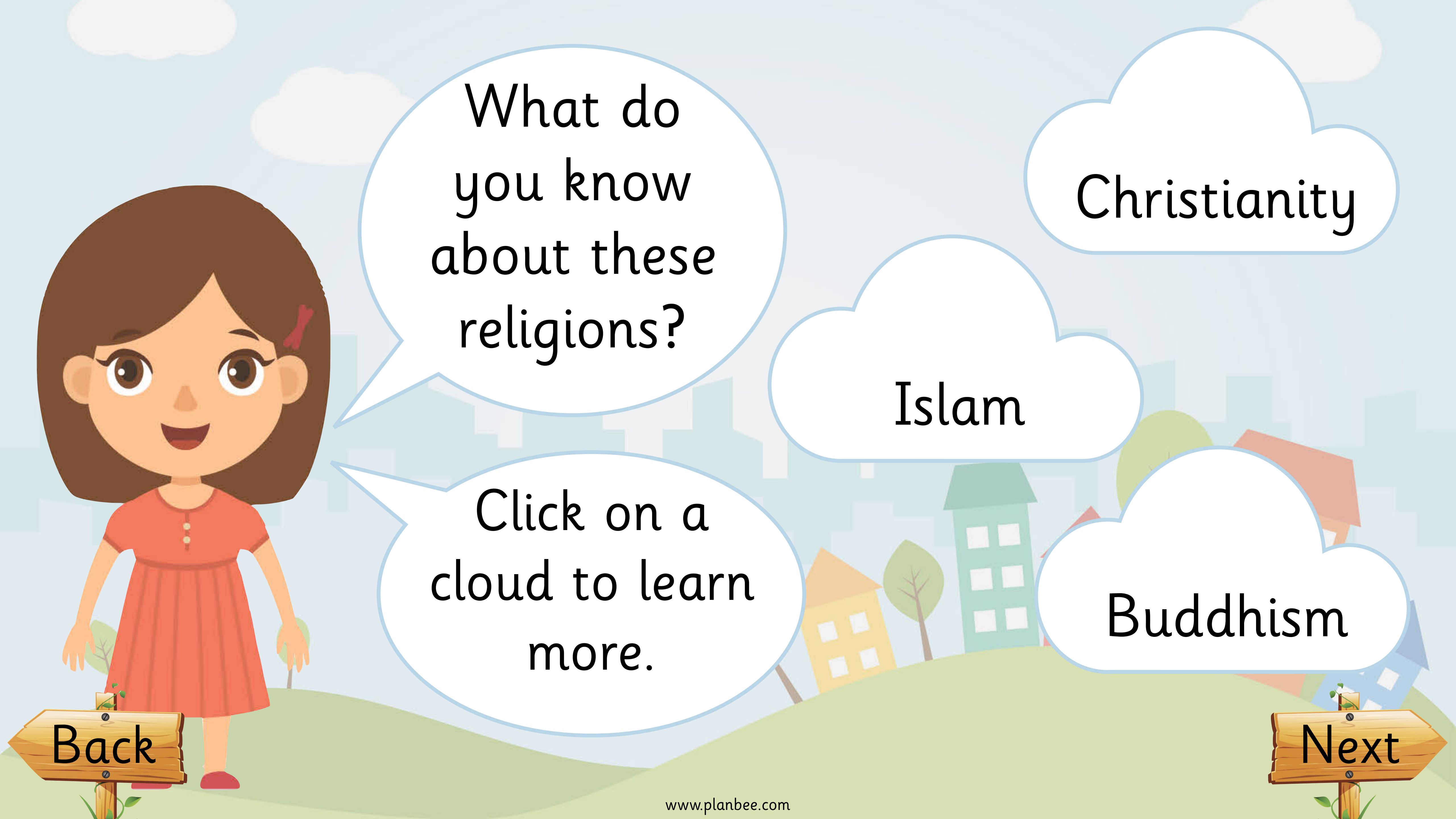


Special Places

Today we will be:

Learning about religious people's special places.

Next



What do
you know
about these
religions?

Click on a
cloud to learn
more.

Christianity

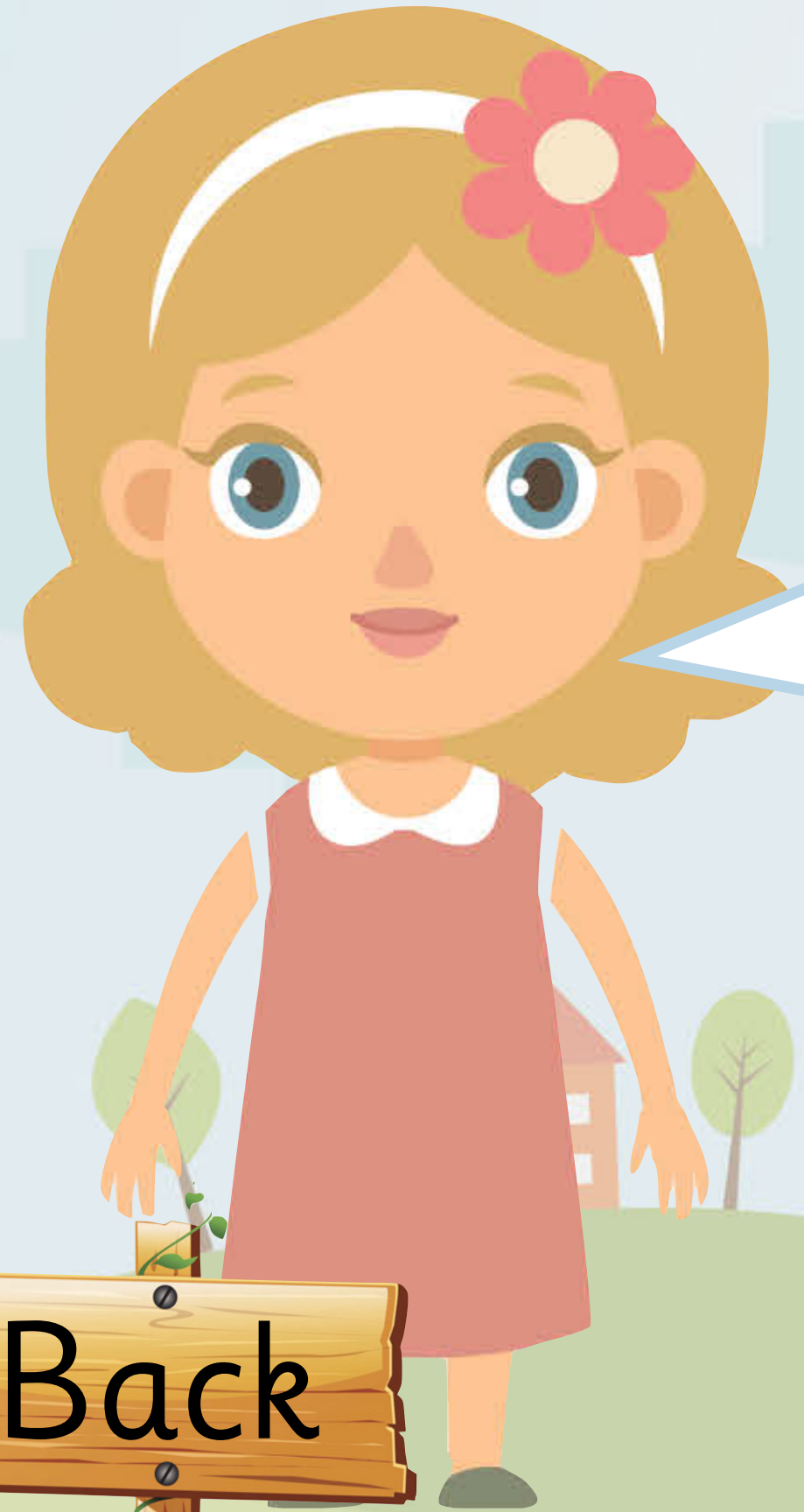
Islam

Buddhism


Back

Next

People who follow Christianity are called Christians. Christians believe in one God, who is everywhere and can see and knows everything. Christians believe that Jesus was the son of God. The teachings of God are found in a holy book called a Bible.



Some
Christians enjoy
going to a special
place to worship
or pray.



Do you know
the name of the
special place
Christians go to?

Back

Next

The special place Christians go to worship and pray to God is called a church. A church is a religious building. Sunday is a time when most Christians will meet to worship God. If they meet in a church there will usually be prayers, hymns and readings from the Bible.



Back



Have you
seen a church
before?

Next

Special Christian places in the UK include St. Paul's Cathedral and Westminster Abbey. Both of these places are in London. Westminster Abbey is where Queen Elizabeth II was crowned and married. St. Paul's holds several memorials to notable Britons. The dome of St. Paul's is the second biggest dome in the world.

Westminster Abbey



St. Paul's Cathedral

Have
you ever
visited these
places?

Back

Next

People who follow Islam are called Muslims. Muslims believe a man called Muhammad founded Islam. They believe he was a prophet sent from God. The word for God in Arabic is Allah. The teachings of Allah are found in a holy book called a Qur'an.



Some Muslims enjoy going to a special place to worship or pray. Do you know the name of the special place that Muslims go to?

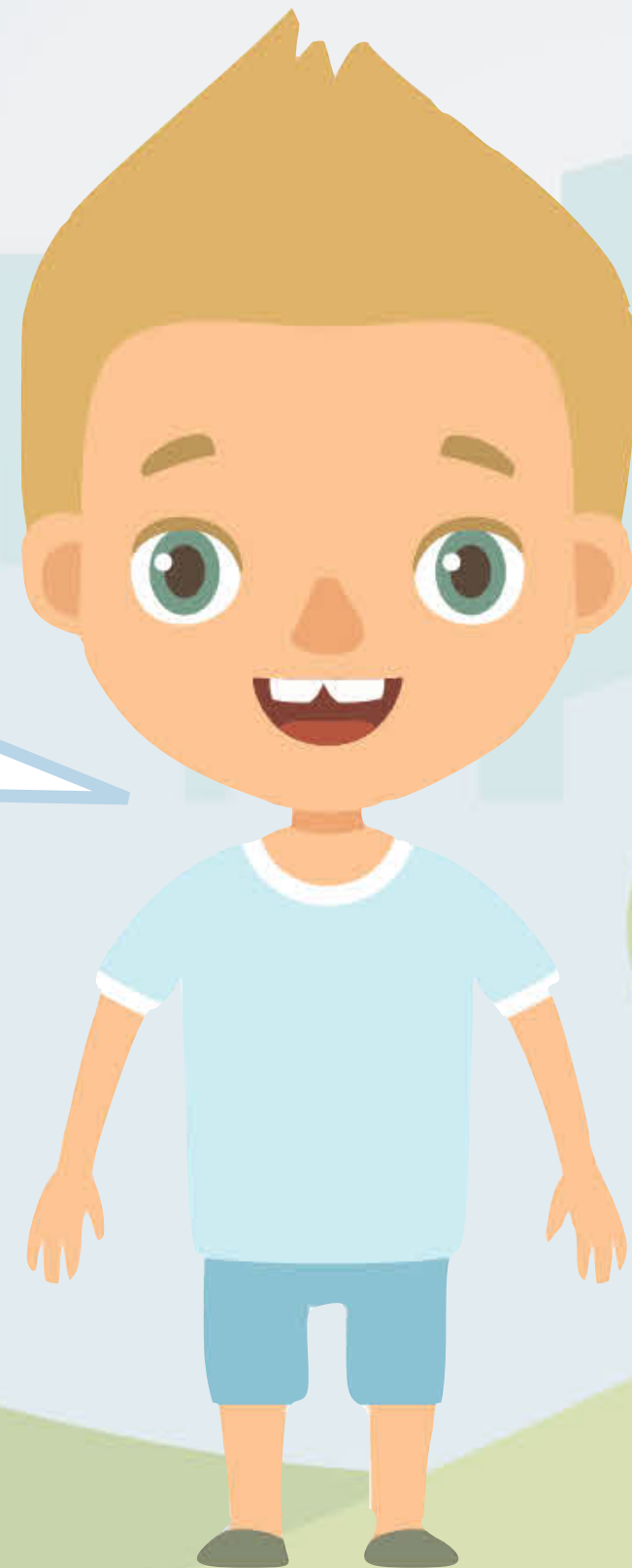
Back

Next

The religious building where Muslims go to worship is called a mosque.

The mosque is the centre of the community to some Muslims. Some Muslims attend the mosque for their five daily prayers. Every mosque has a mihrab, a niche in the wall that indicates the direction of Mecca, the direction towards which Muslims pray.

Have you
seen a mosque
before?



Back



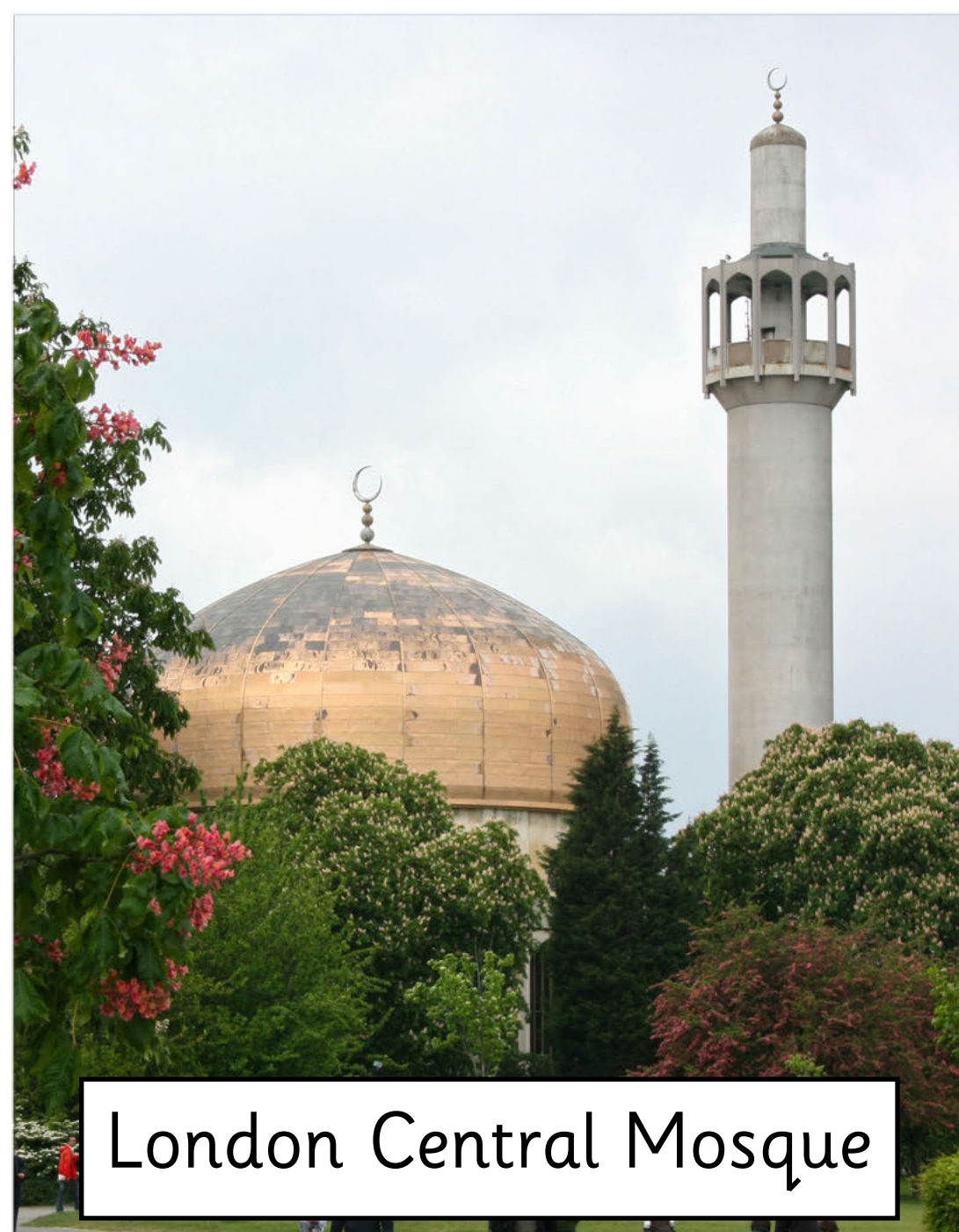
Next

Special Islamic places in the UK are the Shah Jahan Mosque or Woking Mosque, this is the first mosque built in the UK, and the London Central Mosque or Regent's Park Mosque, which is also known as the Islamic Cultural Centre. It provides a spiritual, educational, religious and social network for those who are interested to learn more about Islam.

Woking Mosque



London Central Mosque

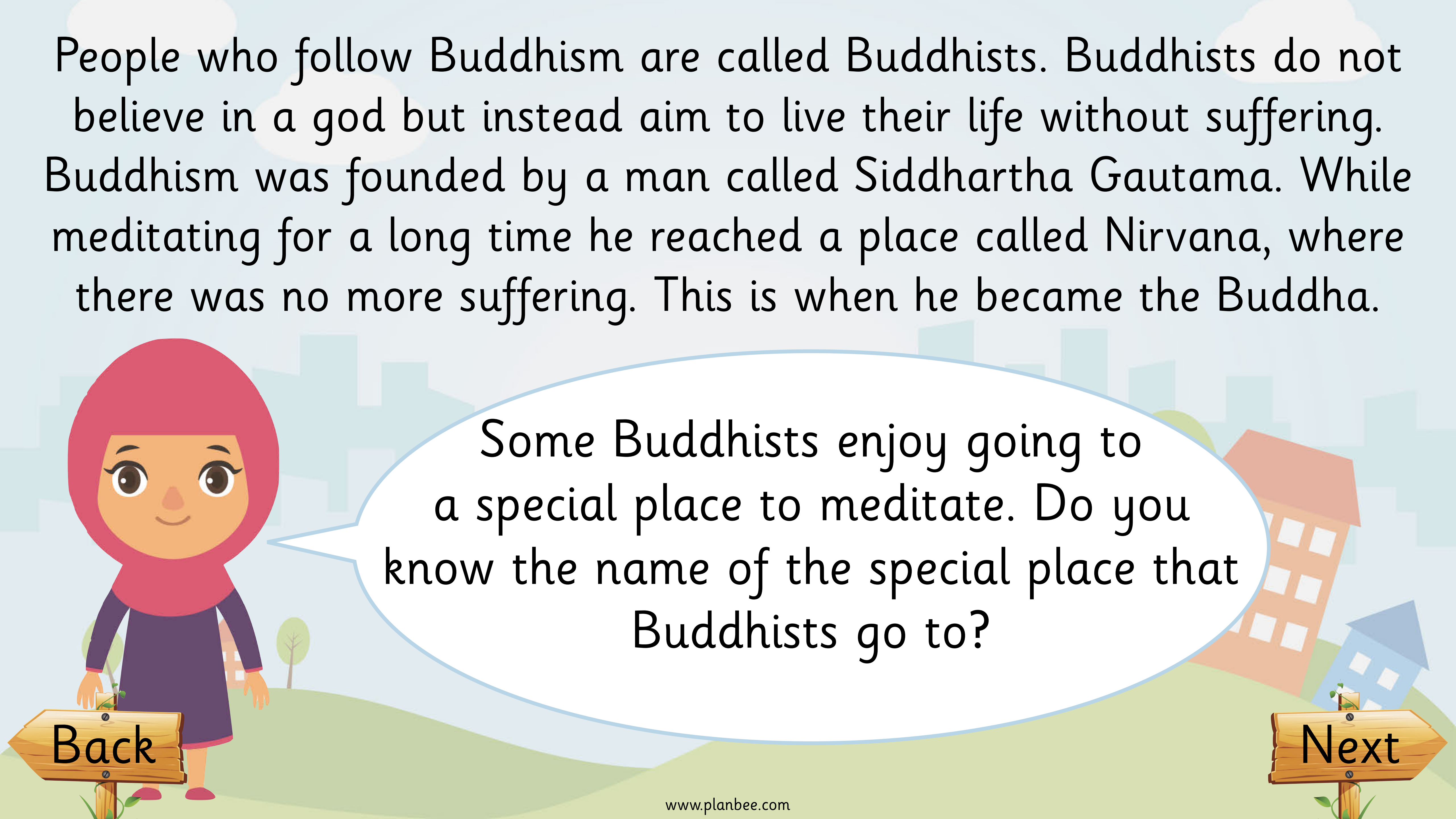


Have
you ever
visited these
places?

Back

Next

People who follow Buddhism are called Buddhists. Buddhists do not believe in a god but instead aim to live their life without suffering. Buddhism was founded by a man called Siddhartha Gautama. While meditating for a long time he reached a place called Nirvana, where there was no more suffering. This is when he became the Buddha.



Some Buddhists enjoy going to a special place to meditate. Do you know the name of the special place that Buddhists go to?

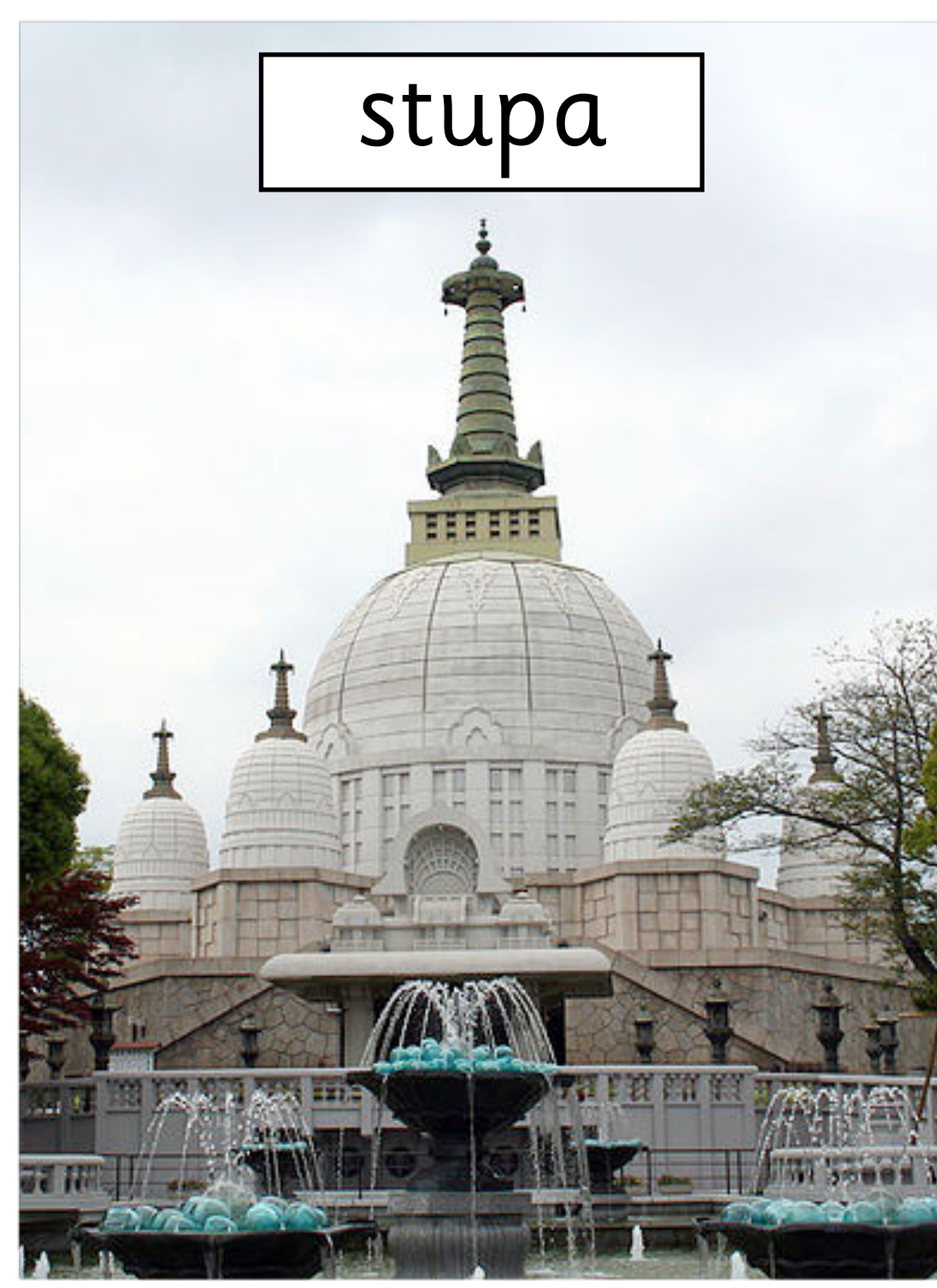
Back

Next

The religious building and special place where Buddhists go to worship is called a temple. Buddhist temples vary depending on what area of the world they are in and what branch of Buddhism they belong to. The two most famous kinds of temples are called pagodas and stupas.



pagoda



stupa



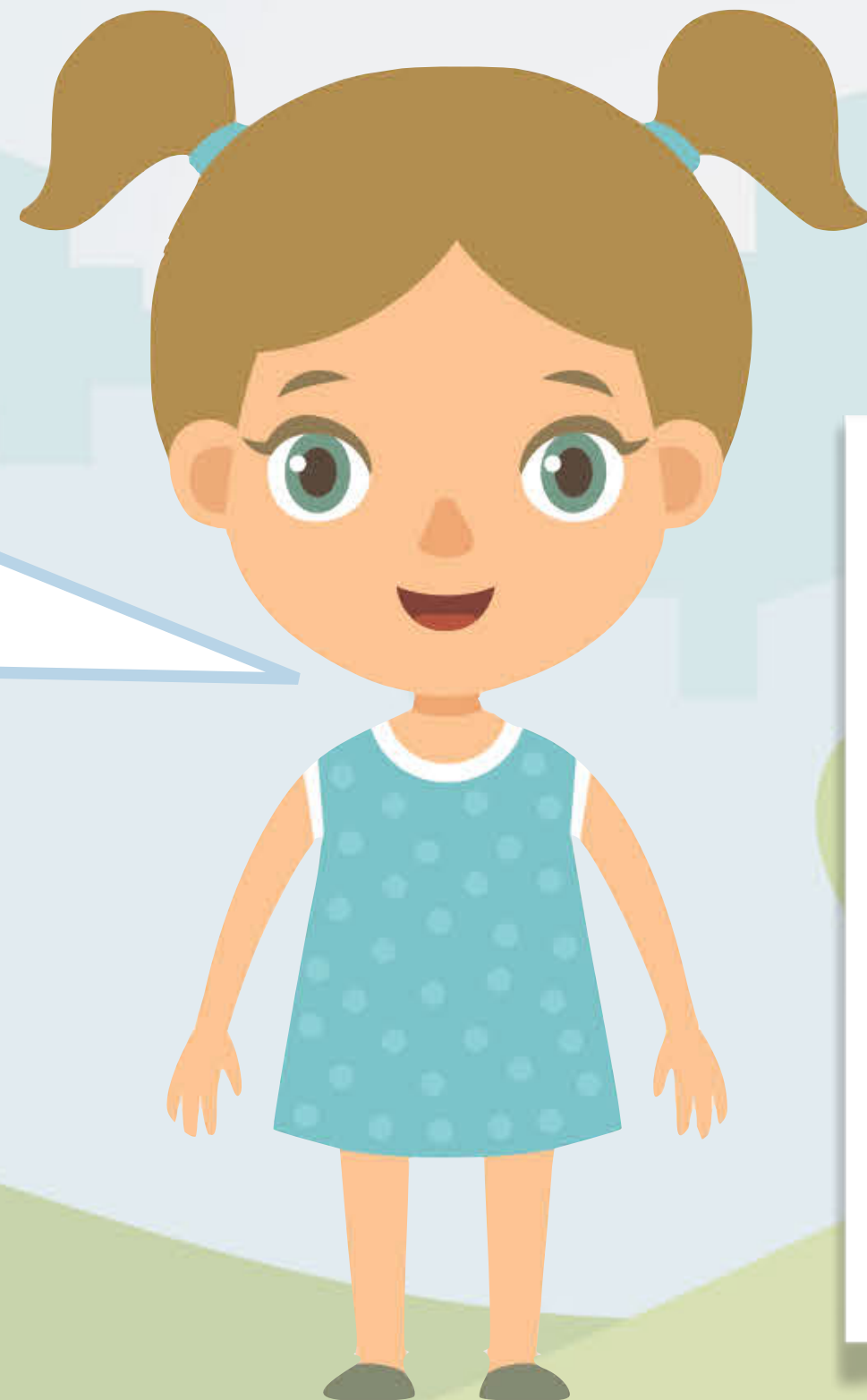
All
Buddhist temples
are designed to
symbolise the five
elements: fire, air,
water, earth and
wisdom.

Back

Next

A special Buddhist place in the UK is the London Peace Pagoda, in Battersea, London. This was a special gift given by the Venerable Nichidatsu Fujii, founder of the Japanese Buddhist movement, sent as a sign of peace and respect. The Buddhapadipa Temple, in Wimbledon, London, is the first Buddhist temple built in the UK.

Have
you ever
visited these
places?



Back

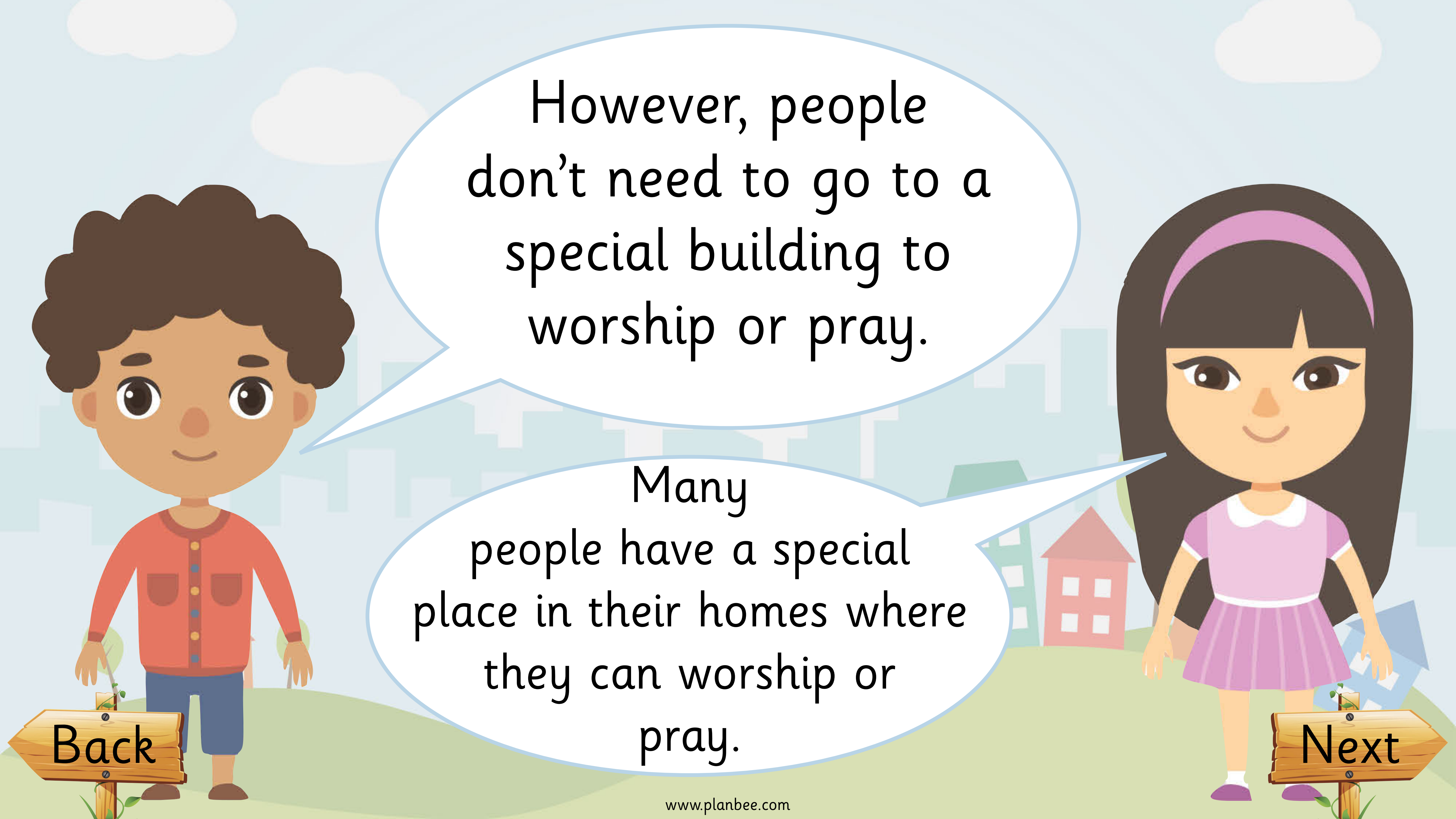


The Buddhapadipa Temple

The London Peace Pagoda



Next



However, people
don't need to go to a
special building to
worship or pray.

Many
people have a special
place in their homes where
they can worship or
pray.

Back

Next

It is not an essential part of a Buddhist's worship to go to a temple on a regular basis. Most Buddhists may also have a special place called a shrine in their homes. Here, they have a statue of Buddha, candles, incense and other items. When Buddhists worship, they thank Buddha for showing them the path to enlightenment and meditate to try and achieve nirvana.



Do you have a special place at home where you like to go to?

Back

Next

What special buildings do you think they are?

Have a look at the next few slides and the inside of some special places.

How do you think people feel when they visit these special places?



Back

Next



Back

Next



Back

Next



Back